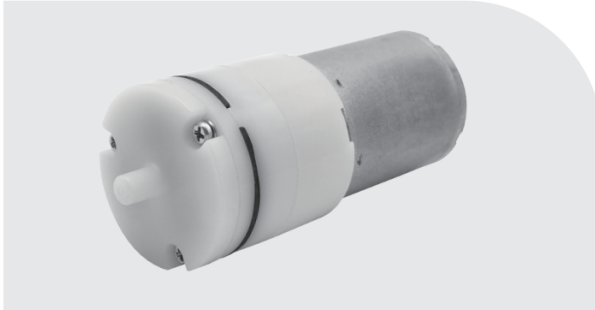


PYP370-XA (气泵)

气泵
AIR PUMP



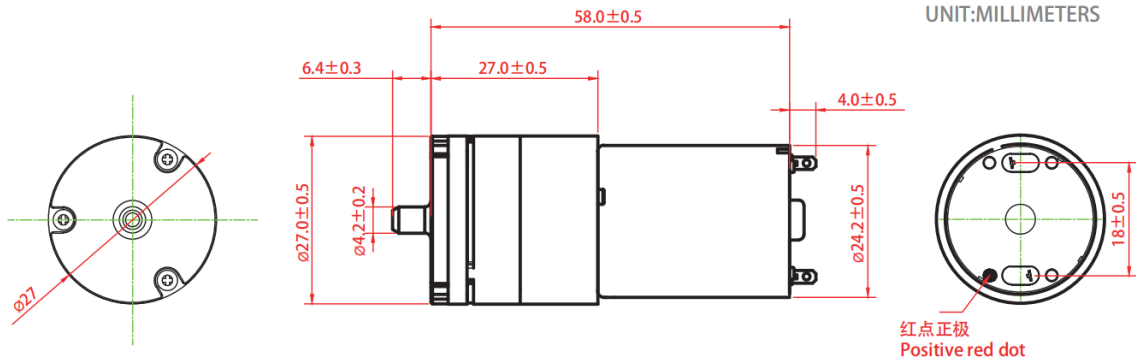
典型应用 Typical Applications

- Home appliances, medical, beauty, massage, adult products
家用电器.医疗.美容.按摩.成人用品.
- Sphygmomanometers. Adult products. Massagers. Essential oil machines, Booster technology
血压计.成人用品.按摩器.精油机.增压技术

外形尺寸

Dimension

WEIGHT:36.0g(APPROX)
UNIT:MILLIMETERS



产品规格

Product Specifications

额定电压 Rated Voltage	DC 3V	DC 6V	DC 9V	DC 12V
额定电流 Rated Current	≤ 800mA	≤ 400mA	≤ 260mA	≤ 200mA
功率 Power	2.4 W	2.4 W	2.4 W	2.4 W
气嘴口径 Air Tap O.D.	Ø4.3mm			
最大压力 Maximum Pressure	≥ 60KPa(450mmHg)			
流量 Air Flow	0.5-3.0 LPM			
充气时间 Inflation Time	<10s (From 0 to 300mmHg in a 500cc tank)			
噪音 Noise Level	≤ 60db (30cm away)			
寿命测试 Life Test	≥ 50,000 Times (ON 10秒, OFF 5秒)			
气密性 Leakage	<3.0mmHg/min (from 300mmHg in a 500cc tank)			
重量 Weight	36g			

* Other parameters: according to customer demand for design/其他参数：根据客户的需求设计。

39

SHENZHEN PINCHENG MOTOR CO.,LTD
http://www.pinchengmotor.com Tel: +86-755-2879 9949 Fax: +86-755-2879 9811

C