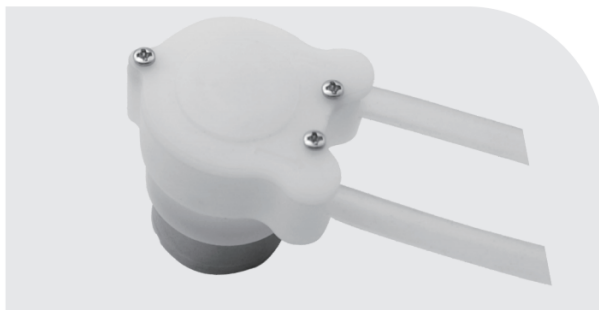


# PYRP350-XA (350蠕动泵)

蠕动泵  
LIQUID PUMP



## 典型应用 Typical Applications

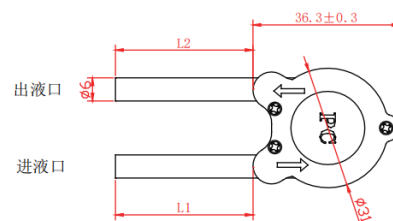
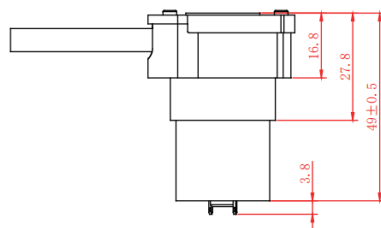
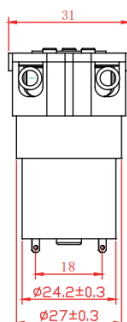
Care and beauty products  
洗护用品、美容用品.

Hand washing machine, disinfectant machine  
洗手液机、消毒液机

## 外形尺寸

## Dimension

WEIGHT:50.0g(APPROX)  
UNIT:MILLIMETERS



## 产品规格

## Product Specifications

额定电压	Rated Voltage	DC 3V	DC 3.7V	DC 4.5V	DC 6V
额定电流	Rated Current	≤ 800mA	≤ 700mA	≤ 600mA	≤ 400mA
功率	Power	2.4 W	2.4 W	2.4 W	2.4 W
气嘴口径	Air Tap O.D.	Ø6.0mm			
抽液量	Water flow	150-200 mLPM			
最大真空度	Maximum Vacuum	≤ -20 Kpa(-150mmHg)			
噪音	Noise Level	≤ 65db (30cm away)			
寿命测试	Life Test	≥ 100,000 Times (ON 2秒, OFF 2秒)			
扬程	Pump Head	≥ 0.5m			
吸程	Suction Head	≥ 0.5m			
重量	Weight	50g			

\* Other parameters: according to customer demand for design/其他参数：根据客户的需求设计.

73

SHENZHEN PINCHENG MOTOR CO.,LTD  
http://www.pinchengmotor.com Tel: +86-755-2879 9949 Fax: +86-755-2879 9811

F